

# Diaphragm seals MD 80

## Flange version

2



- Flush, welded diaphragm
- For DIN and ASME flange connections
- Numerous special materials and coatings (option)
- With bottom instrument connection as cell design (option)



**Application** For mounting to Bourdon tube pressure gauges, pressure transducers or pressure switches. For corrosive, highly viscous, polluted, crystallising or hot media. Typical application areas:

- Chemical Industry
- Petrochemistry
- Refineries
- Power plant engineering

### Technical specifications

**Type**  
MD 80

#### Process connection

Stainless steel 316 L,  
Flange connection as per EN 1092-1 type B 1  
DN 25 to 100 or  
ASME B 16.5 (Raised Face) DN 1" to 4"

#### Diaphragm

Stainless steel 316 L

#### Instrument connection

Welded connection

#### Pressure transmission liquid

Paraffin oil (FM 09), FDA-listed

#### Pressure ranges

See price list section

#### Nominal pressure

PN 40  
Class 150 to 300

### Options

#### Process connection

- Special materials/coatings
- Other sealing surfaces
- Cell design

#### Diaphragm

- Special materials: Hastelloy, Monel, Nickel, Inconel, Incoloy, Platinum, Titanium, Tantalum, Zirconium, other Chrome-nickel-steel Alloys
- Coatings/linings:
  - PFA (up to 250 °C), ECTFE (up to 150 °C)
  - PTFE (up to 150 °C, up to 100 bar)
  - Silver (up to 150 °C), gold (up to 200 °C)

#### Miscellaneous

- Higher nominal pressures
- Cell design
- Adapter for instrument connection G $\frac{1}{4}$ B/G $\frac{1}{2}$ B
- Cooling element (> 100 °C)
- Capillary tube (back or bottom)
- Other filling liquids
- Customer-specific flanges
- Other nominal diameters

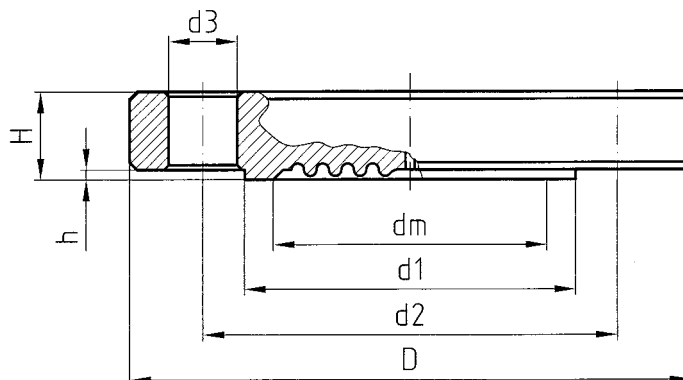


See page 189 for prices.

# Diaphragm seals MD 80

## Types and dimensions (mm)

2



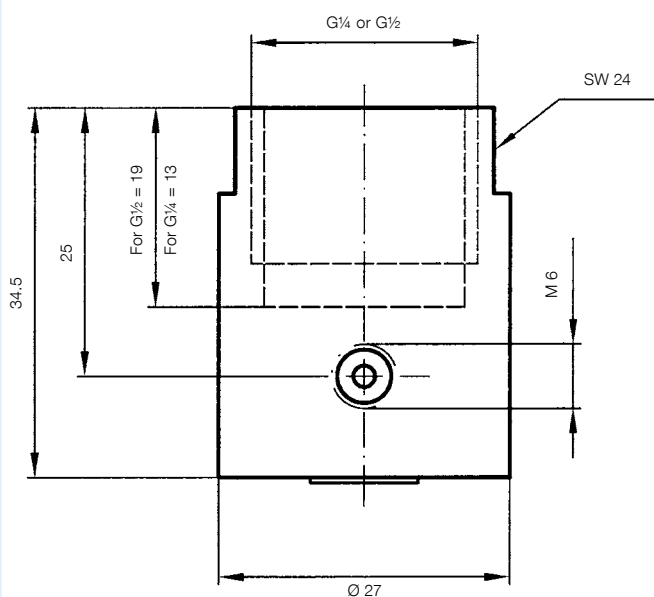
Flange connection as per EN 1092-1 type B 1

DN	PN	D	d1	d2	d3	H	h	dm
25	40	115	68	85	4x14	18	2	28
40	40	150	88	110	4x18	18	2	48
50	40	165	102	125	4x18	18	2	48
80	40	200	138	160	8x18	24	2	48
100	40	235	162	190	8x22	24	2	48

Flange connection as per ASME B 16.5 (Raised Face)

DN	CL	D	d1	d2	d3	H	h	dm
1"	150	108	50.8	79.4	4x15.9	14.3	1.6	28
	300	123.9	50.8	88.9	4x19.1	17.5	1.6	28
1½"	150	127	73.2	98.6	4x15.9	17.5	1.6	36
	300	155.6	73.2	114.3	4x22.4	22.4	1.6	36
2"	150	152.4	92.1	120.7	4x19.1	19.1	1.6	48
	300	165.1	92.1	127	8x19.1	25.4	1.6	48
3"	150	190.5	127	152.4	4x19.1	23.9	1.6	48
	300	209.6	127	168.3	8x22.4	31.8	1.6	48
4"	150	228.6	157.2	190.5	8x19.1	23.9	1.6	48
	300	254	157.2	200.1	8x22.3	31.7	1.6	48

Adapter for instrument connection G¼/G½ with filling port



Cooling element, can be welded at both ends

