

# Level sensor tester GPG 01




- Intuitive operation by means of "step by step" instructions
- For all level sensors as per EN 13616 design B1 (formerly TRbF 511)
- For liquids with a flash point of > 55 °C such as fuel oil, diesel and other liquid fuels or oils
- High-resolution TFT colour display and powerful lithium-ion battery for optimum readings and many measurements
- Robust protective sleeve with magnet for convenient, hands-free operation

2

**Application** For full testing of level sensors which are not used in hazardous areas/potentially explosive atmospheres. It is possible to perform a simple electrical function test with the level sensor installed as well as a wet test with the level sensor uninstalled.

**Description** Modern, robust housing with high-resolution TFT colour display and foil keypad with four keys and On/Off button. A 1.2 m connection cable with a coupling socket 903 for plugging in the level sensor is mounted at the top. A mini USB port for the power supply unit/battery charger is located at the bottom. The electrical function test displays the heat-up time in seconds and filling release. When a wet test is performed, the switch off time in seconds after submersion in liquid is indicated. At the end of the test, the full test result is displayed in the form of a summary. In the case of error messages and malfunctions, the display colour changes to red and a corresponding text is shown. If the device is not in use, it is switched off automatically; the charging function remains active.

## Technical specifications

### Operating temperature range

Ambient: 0/40 °C  
Storage: -20/+50 °C

### Hours of operation

Max. 38 hours

### Weight

Approx. 360 g (device)

### Dimensions

W x H x D: 66 x 143 x 37 mm  
(without connection cable)

### Connection level sensor

1.2 m connection cable with coupling socket 903

### Display

TFT colour display, 2.8"  
W x H: 45 x 60 mm

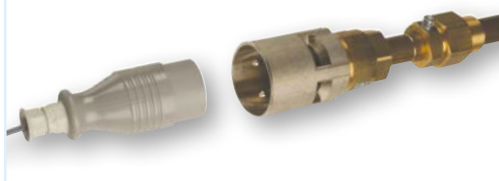
### Supply voltage

Lithium-ion battery (3.6 V/1,800 mAh)  
or power supply unit (USB)

### Scope of delivery

Tester with coupling socket 903,  
USB power supply unit, mini USB cable,  
a protective sleeve with magnet, case, instructions.

Level sensor testers with connector – suitable for all level sensor fittings.



|                                   |              |         |
|-----------------------------------|--------------|---------|
| DG: G, PG: 4                      | Part no.     | Price € |
| <b>Level sensor tester GPG 01</b> | <b>46200</b> |         |