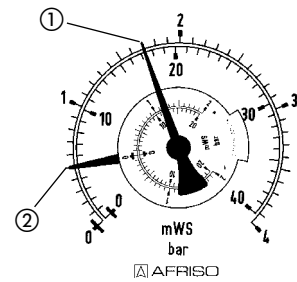


Standard Bourdon tube pressure gauges for differential pressure



- Indication of plus pressure, minus pressure and differential pressure
- Excellent price/performance ratio
- Two independent Bourdon tube systems
- Housing and wetted parts also available in stainless steel (option)



Reading example
 Δp (differential pressure)
 ① p1 (+connection)
 ② p2 (-connection)

Application For differential pressure measurement of gaseous and liquid media which are not highly viscous, do not crystallize and do not attack copper alloys. Specially suitable for heating systems (supply and return pipes). ! For measuring gas or vapour, these gauges must be used in accordance with the table "Selection Criteria as per EN 837-2" (see appendix)!

Technical specifications

Type

D 2

Nominal size

100

Function

The pressures are measured in two independent Bourdon tube systems ("plus" pressure = high pressure, "minus" pressure = low pressure). The pressure is indicated by means of a dial and a pointer. The differential pressure scale covers 50 % of the range of the "plus" pressure and 50 % of the range of the "minus" pressure. The black pointer ("plus" connection) and the red pointer ("minus" connection) at the differential pressure gauge scale allow you to read the pressures in both systems on the fixed scale.

Accuracy class (EN 837-1/6)

1.6

Ranges (EN 837-1/5)

0/0.6 to 0/60 bar

Application area

The maximum pressure in the system must not exceed the full scale value. For good readability, the differential pressure to be measured should not be less than approx. 20 % of the full scale value.

Operating temperature range

Medium: $T_{max} = +60\text{ }^{\circ}\text{C}$
 Ambient: $T_{min} = -20\text{ }^{\circ}\text{C}$
 $T_{max} = +60\text{ }^{\circ}\text{C}$

Temperature performance

Indication error when the temperature of the measuring system deviates from the normal temperature of 20 °C:
 rising temperature approx. $\pm 0.4\text{ } \%/10\text{ K}$
 falling temperature approx. $\pm 0.4\text{ } \%/10\text{ K}$
 of full scale value

Degree of protection

IP 32 (EN 60529)

Connection

Brass, bottom; parallel in line
 2 x G1/2B – spanner size SW 22 (EN 837-1/7.3)
 Optional: Wetted parts stainless steel

Measuring element

Bourdon tube, "C" type tube, copper alloy

Movement

Brass

Dial

Aluminium, white
 Dial marking black (bar/mWC)

Pointer/dial

Aluminium

Housing

Sheet steel, black

Push on bezel

Sheet steel, black

Window

Instrument glass

DG: M, PG: 2	Part no.	Prices €
RF 100 Dif D 201, 0/1 bar	85610201	
RF 100 Dif D 201, 0/1.6 bar	85611201	
RF 100 Dif D 201, 0/2.5 bar	85612201	
RF 100 Dif D 201, 0/4 bar	85613201	
RF 100 Dif D 201, 0/6 bar	85614201	
RF 100 Dif D 201, 0/10 bar	85615201	
RF 100 Dif D 201, 0/16 bar	85616201	



See the catalogue INDUSTRIAL TECHNOLOGY for other versions.